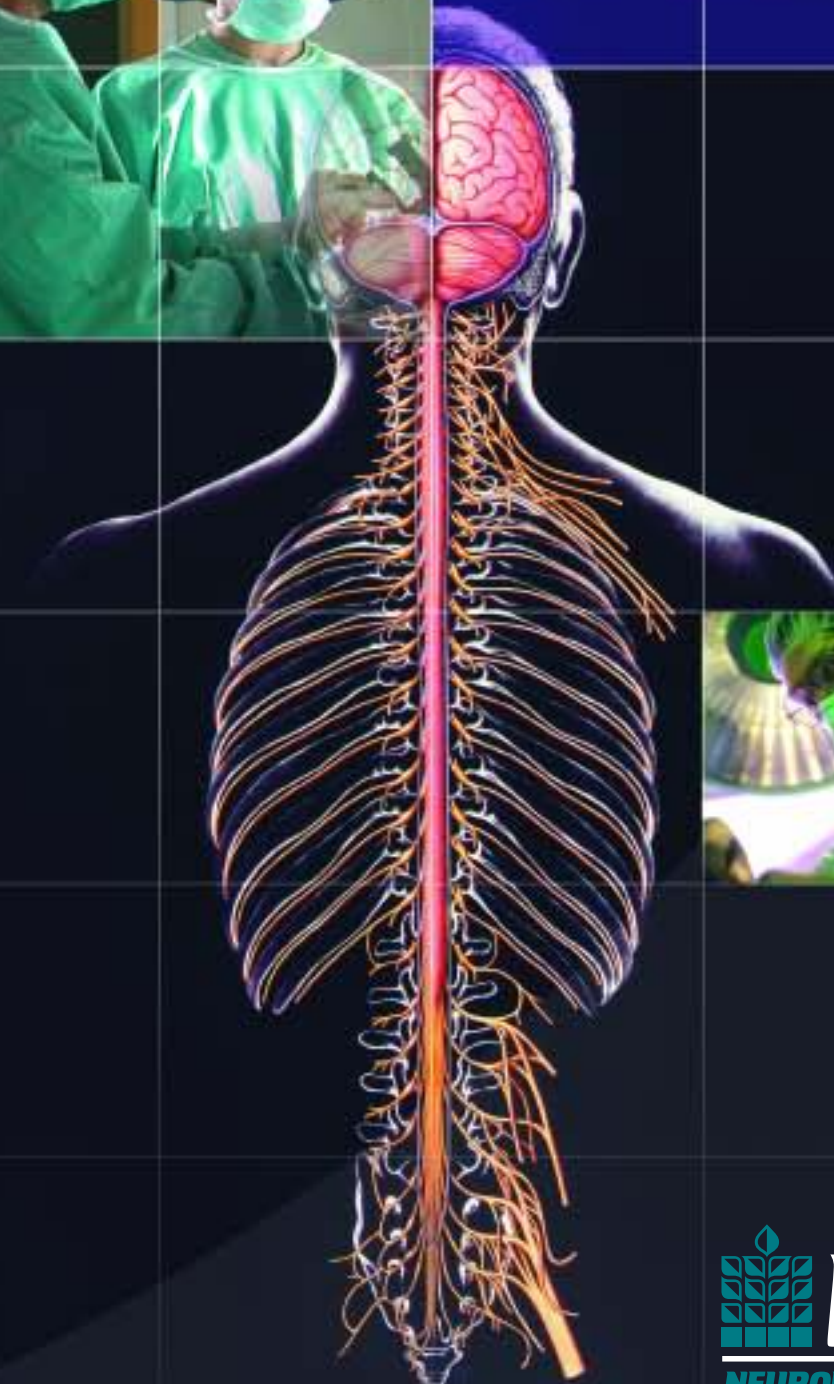


Advancing Care Enhancing Life



For more information on the ETMC Neurological Institute, call 1 (800) 728-2702 or visit www.etmc.org/neuro



East Texas Medical Center
Regional Healthcare System

www.etmc.org/neuro

*Freedom from pain...Restful sleep...Improved motor control...
Returning to normal daily activities*

The specialists at the ETMC Neurological Institute are dedicated to helping people regain lost function and enjoy a better quality of life.



MISSION STATEMENT

The mission of the ETMC Neurological Institute is to establish a comprehensive center of excellence dedicated to the neurosciences that serves as a regional and national referral center. We will provide our patients with the highest quality of healthcare in the most compassionate, efficient and dignified manner at an affordable cost. We believe a highly integrated, multi-specialty clinical practice, with a group culture based in these values, provides the foundation to pursue our primary goals: clinical excellence, innovative research and continuing medical education for our community.



HISTORY

During the late 1980s, the ETMC Neurological Institute began as a cooperative alliance between ETMC Tyler and Tyler Neurosurgical Associates, a team of physicians led by Ronald J. Donaldson, MD. Through Dr. Donaldson's leadership and vision, the Institute has evolved into a comprehensive neuroscience center of excellence. Backed by the resources of the East Texas Medical Center Regional Healthcare System and supported by President / CEO Elmer Ellis, the Neurological Institute has been first in East Texas to apply and refine a number of innovative procedures and technology. Today, as in the past, the physicians and staff of the Neurological Institute pursue the highest standards of excellence as they provide East Texans with neurological care that is truly **second to none.**

SERVICES

The ETMC Neurological Institute brings together neuroscience specialists, dedicated nursing and support personnel, and leading-edge technological resources to provide unparalleled care for the brain, spine and peripheral nervous system. The Institute offers a continuum of services ranging from community outreach and screening to treatment and rehabilitation.

Areas of expertise include the following:

- Neurosurgery
- Neurology
- Conservative Spine Treatment
- Child and Adolescent Neurology
- Interventional Pain Management
- Physical Medicine and Rehabilitation
- Occupational Medicine
- Neuropsychology
- Sleep Medicine
- Neuroradiology
- Interventional Neuroradiology



"We have a concerted effort by physical therapists, occupational therapists, nurse practitioners, surgeons bringing to bear all of the latest efforts in the field...We try to integrate new information and provide the latest technologies and therapies."

George M. Plotkin, MD





DISORDERS TREATED

Each year, the Institute utilizes the most effective diagnostic and treatment technology to improve the lives of patients with neurological disorders of varying severity, including the following conditions:

- Headache
- Neck and Back Pain
- Brain Injury
- Spinal Disorders and Injuries
- Stroke
- Parkinson's Disease
- Essential Tremor
- Multiple Sclerosis
- Insomnia
- Sleep Apnea
- Narcolepsy
- Epilepsy
- Seizure Disorders
- Brain Tumors
- Aneurysm
- Cancer Pain
- Neuropathy

"I love practicing medicine here in Tyler...We have all the support services, plus all the nursing personnel, specialized surgical units, all of the most modern equipment to help us do what we do better."

**John Ledlie, MD,
Neurosurgeon**

More than 1,800 neurological procedures are performed at the Institute each year. Treatment plans are developed to meet each patient's unique needs.

"Developing a treatment plan for pain is a collaboration between physician and patient. Patient education and patient participation are paramount for positive outcomes."

Barbara Davidson, MD



CENTERS OF EXCELLENCE

To maintain the highest standards of care in fields where knowledge is advancing daily, the Institute's Centers of Excellence coordinate preventive, diagnostic, surgical and therapeutic expertise to assist patients with specific conditions.

Sleep Disorders Center—Assists people who have difficulty falling asleep or staying asleep at night, as well as those who have trouble staying awake during the day. Overnight monitoring and daytime evaluation provide essential information on the causes of sleep/wake disorders so that effective treatment can be initiated. The ETMC Sleep Disorders Center has been accredited by the American Academy of Sleep Medicine (AASM).

Pain Management Center—Specializes in non-surgical methods of addressing backache, neck pain, and headache. The Pain Management Center conducted the first clinical trials with IDET (intradiscal electrothermal therapy), a technique that is less costly than surgical fusion and promotes a rapid recovery. The physicians and staff of the Pain Management Center work closely with patients to develop a comprehensive plan to reduce or eliminate chronic pain. The Center also assists neurosurgeons by using nerve blocks to isolate specific nerves involved in causing pain.

Movement Disorders Center—Applies the latest diagnostic and therapeutic technologies, including deep brain stimulation, to restore lost motor skills to people with Parkinson's Disease, Essential Tremor, and many other movement disorders. Patients are closely monitored to ensure that they are receiving the full benefits of pharmaceutical therapies and to minimize side effects of the medications.

Stroke Center—Provides a full spectrum of preventive, diagnostic and therapeutic services, ranging from risk management to post-stroke rehabilitation. Post-stroke care is tailored to meet the needs of each patient, reflecting the severity of the deficits caused by the stroke. Through ongoing community education, the Stroke Center strives to reduce the incidence of stroke in East Texas.

Neurointerventional Radiology Center—Uses X-ray guidance for precise positioning of coils, stents and other devices that block the blood supply to brain tumors, aneurysms and vascular malformations, thereby making neurosurgery safer or eliminating the need for surgery altogether. Introduces thrombolytic drugs to prevent stroke by dissolving blood clots in the brain.



"As anesthesia interventional pain physicians, we offer advanced diagnostic and therapeutic treatments. We work closely with other specialties such as neurosurgery, neurology and PM&R (physical medicine and rehabilitation) to control our patients' pain and improve function."

Robert M. Sutherland, MD
Pain Management Specialist



FACTS ABOUT THE NEUROLOGICAL INSTITUTE

Statistics

- Admissions each year..... **900**
- Neurosurgeries (inpatient volumes) per year..... **960**
- Pain Procedures..... **12,238**
- Sleep Studies..... **683**

Facilities

- Dedicated, hardwired neuro operating room (with capacity to use three suites at a time when indicated)
- Dedicated neurological interventional radiology suite
- Neurological Intensive Care Unit (ICU)..... **6 beds**
- Neurological Intermediate Care Unit..... **12 beds**
- Neurological General Care Unit..... **16 beds**



NEUROSCIENCE NURSING PROFESSIONALS

ETMC neuroscience nurses receive specialized training at prestigious neurological centers and expand their knowledge through critical care classes, neurological Grand Rounds, and continuing education that meets the standards of the American Association of Neuroscience Nursing. In addition to having the technical expertise to work with the most advanced monitoring equipment, they are exceptionally good at detecting and reporting on subtle changes in a patient's condition and providing neurosurgeons and neurologists with critically important information about the patient's progress. Their in-depth knowledge equips these healthcare professionals to ensure that each patient receives the best possible in-hospital care.

RESEARCH

The Neurological Institute focuses on translating scientific discoveries into practical applications that can be used effectively in the clinical setting.

The research team includes physicians and certified research personnel who are devoted to advancing the field of neuroscience. The Neurological Institute's clinical investigators are recognized throughout the nation and abroad for their research, publications and presentations. In fact, the work of our investigators has been integral in advancing new treatments such as BMP (Bone Morphogenetic Protein), Kyphoplasty and IDET (Intradiscal Electrothermal Therapy).

EDUCATION

ETMC Neurological Institute physicians reach out to the community through an ongoing series of free seminars on neurological and musculoskeletal problems. The Institute shares neuroscientific knowledge with medical practitioners throughout East Texas at quarterly Grand Rounds, annual symposia and monthly neuroscience conferences.

The Neurological Institute is part of the East Texas Medical Center Regional Healthcare System, an extensive network of caring that includes an ever-growing number of hospitals and clinics throughout East Texas.

For more information on the ETMC Neurological Institute, call **1 (800) 728-2702** or visit **www.etmc.org/neuro**